

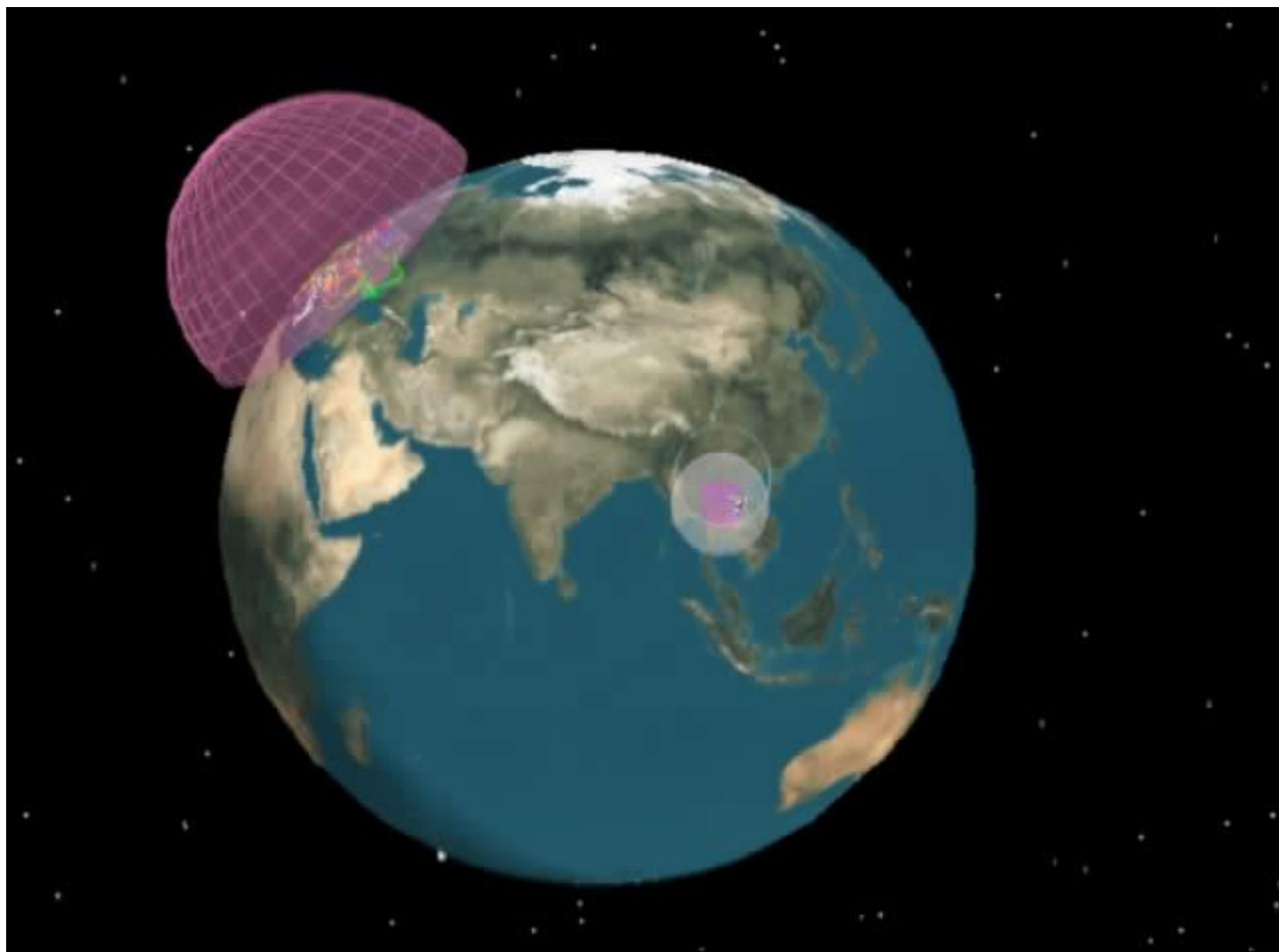
EUROPEAN SPACE IMAGING

European Preferred Gateway For VHR Imagery

Pschichor@euspaceimaging.com



AEUSI



EUROPE'S LEADER IN

IMAGERY SOLUTIONS

- Infrastructure Operator since 2002: Operating the DAF Ground Station to downlink and disseminate VHR Data.
- Leading supplier of VHR Satellite Imagery to all EU Agencies
- Extensive network of innovative partners and regional distributors
- Customer base covers more than 1700 customers in 59 countries in Europe and North Africa. Each year we process 3500-4500 orders.

INVESTING IN EUROPEAN

GROUND INFRASTRUCTURE

- Significant investment to upgrade the ground station over the years for local tasking and direct downlink
- Personalised approach to planning, offering the customer the most flexibility from a satellite provider
- Near real-time delivery of data in as little as 30 minutes and with an average delivery of a few hours. Non standard delivery options for security accounts



REDUCING

THE LATENCY

Near Real Time Orders: Continuing our success story:

- Further reducing the latency to less than **30 minutes**
- Scaling up the quantity of time critical orders

New DAF 3.0: Scalable System to allow performance scale up if needed

-> AIM: decreasing the latency to less than **20 minutes**



FLEXIBLE TASKING SOLUTIONS

Reducing the Cut off Time: Last minute order entry ensures that our customer can quickly react on emerging situations and have intra day result with our Satellite Imagery

Collection Parameters: Flexibility on non standard tasking requests: Multiple Stereo acquisitions, special look angles and more.



OUR EXPERTISE



TECHNICAL EXPERIENCE

All staff have a master degree in geography, geodesy or related science



OPERATIONS PRODUCT MANAGERS

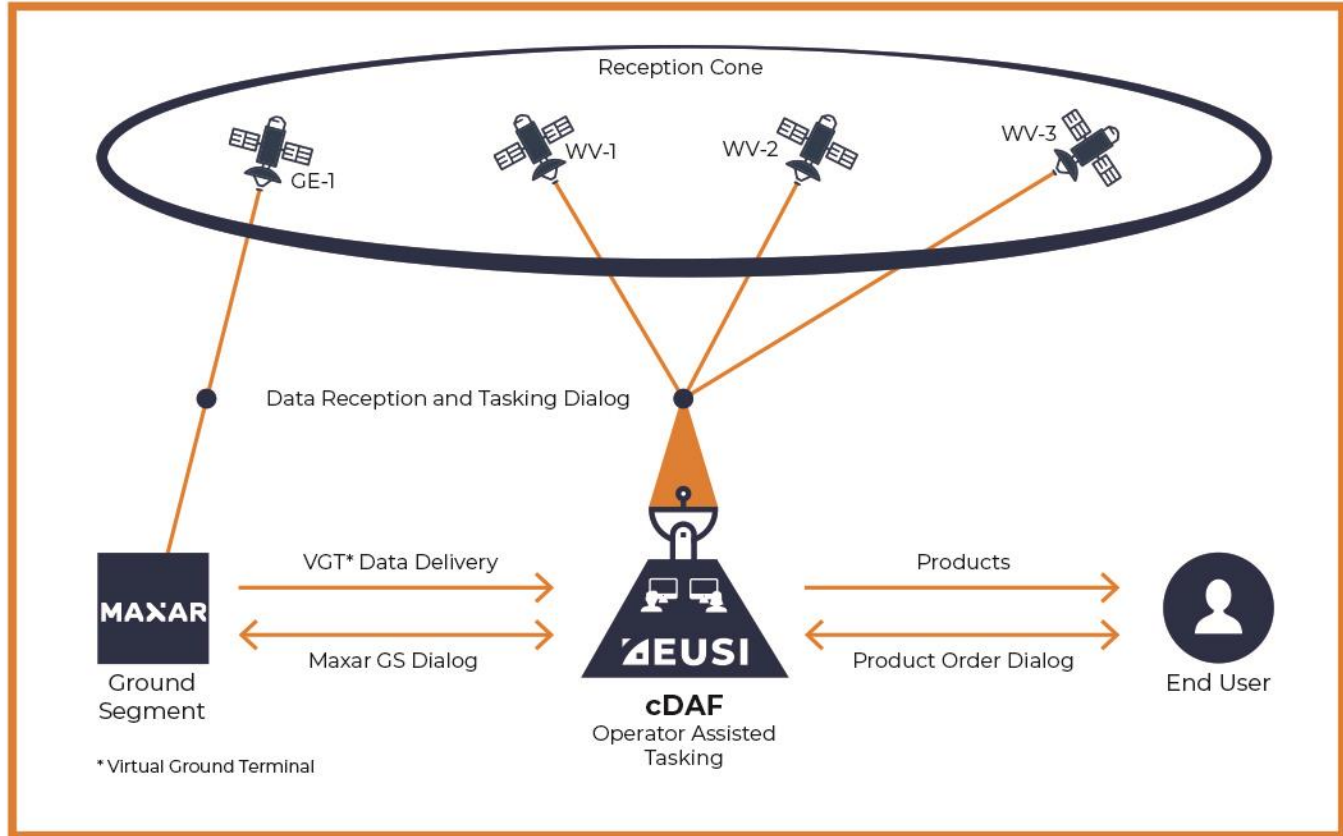
Four certified product order specialists (working with the order handling system) and 3 long-time operations managers to assist in high season



PERSONALISED CARE

From first enquiry through to project completion we have built multiple longstanding relationships with our customers offer 24/7 care

GROUND STATION PROCESS



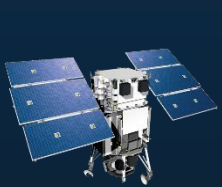
COUNTRY COVERAGES

TASKING VHR CAPABILITIES

Worldview Global Alliance Sensor Overview:

Legacy : WorldView-1, WorldView-2, WorldView-3, Geoeye-1

Future : Legion-1, Legion-2, Legion-3, Legion-4, Legion-5, Legion-6



WorldView-1
PAN, 50cm



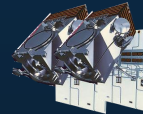
WorldView-2
RGBN (8Bands),
46cm



GeoEye,
RGBN, 41cm

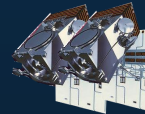


WorldView-3,
RGBN (16 Bands), 30cm



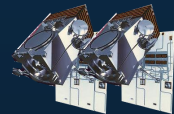
Legion 1&2,
RGBN (8 Bands),
30cm

Launch Q2 2023



Legion 3&4,
RGBN (8 Bands),
30cm

Launch Q3 2023



Legion 5&6,
RGBN (8 Bands),
30cm

Launch early 2024

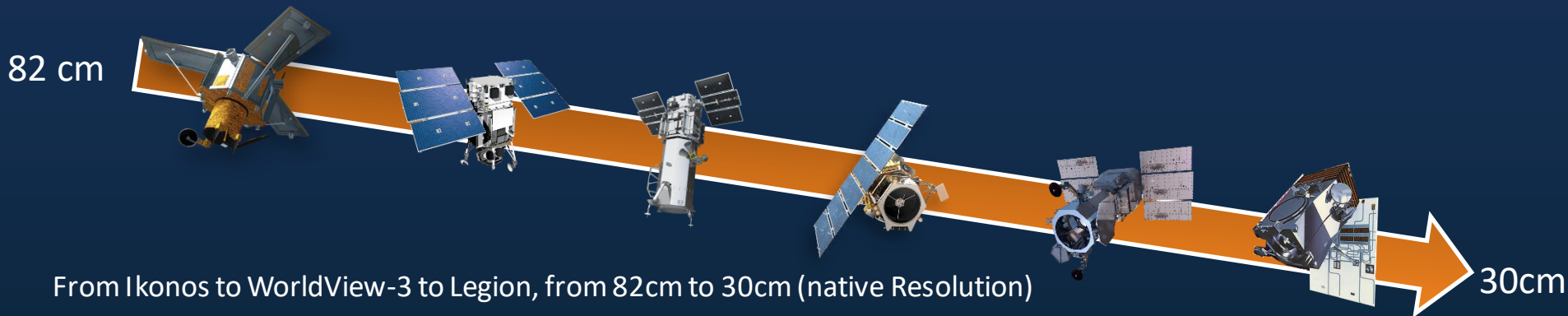
CURRENT SATELLITES

FUTURE SATELLITES

SPATIAL RESOLUTION



RESOLUTION DEVELOPMENT



Satellite	IKONOS	Worldview-1	Worldview-2	GeoEye	WorldView-3	Legion 1-2 (3-6)
Resolution	82 cm	50cm	46cm	41cm	30cm	30cm
Launch	1999	2007	2009	2008	2014	2023

NOAA Regulation 50cm

NOAA Regulation 25cm

NOAA „opens“
regulation

SPATIAL RESOLUTION



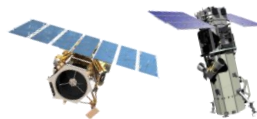
80 cm



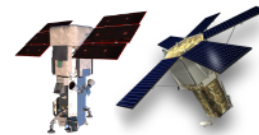
60 cm



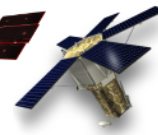
50 cm



40 cm



30 cm



15 cm HD



1999



2001



2007



2008/09



2014



2020

WHAT IS HD?

- A technique that improves the visual clarity of an image.
- The image is aesthetically refined with precise edges and well reconstructed details.
- It enables faster and more accurate data extraction from images collected by our satellite constellation.



Always check native sensor resolution vs product GSD

15 cm HIGH DEFINITION



VISUAL CLARITY

easier to interpret images, allowing you to find critical features faster



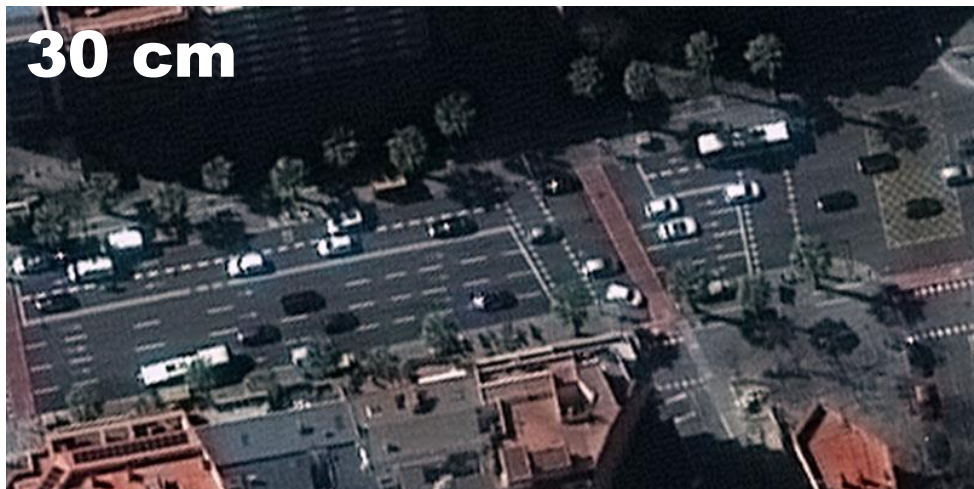
ACCURATE FEATURE IDENTIFICATION

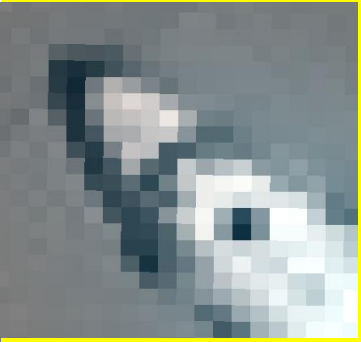
have the level of detail available to accurately identify features



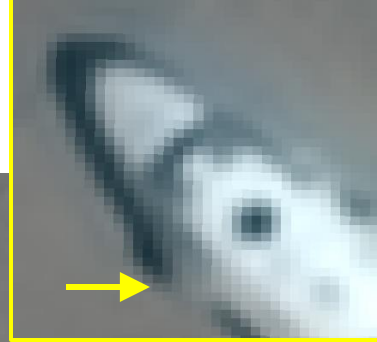
RAPID DECISION MAKING

faster interpretation driving rapid confident mission decisions





An-26 CURL



30cm



15cm

TASKING CAPACITY

30CM WITH LEGION & WORLDVIEW-3

Revisit with 30 cm: 12-15 times a day at southern European latitude

Mid Inclined Orbits: revisits from sunset to sundown:

- Emergency response, maritime surveillance, infrastructure development, and more
- Reducing risks of clouds
- Intraday monitoring
- 15 HD coverage to be massively increased



INTRA-DAY IMAGING

The combined coverage of the world's most advanced satellite imaging constellation allows EUSI to offer up to **15 daily collections** at **30 - 50 cm resolution** of Earth's most frequently changing regions.





Legion-1

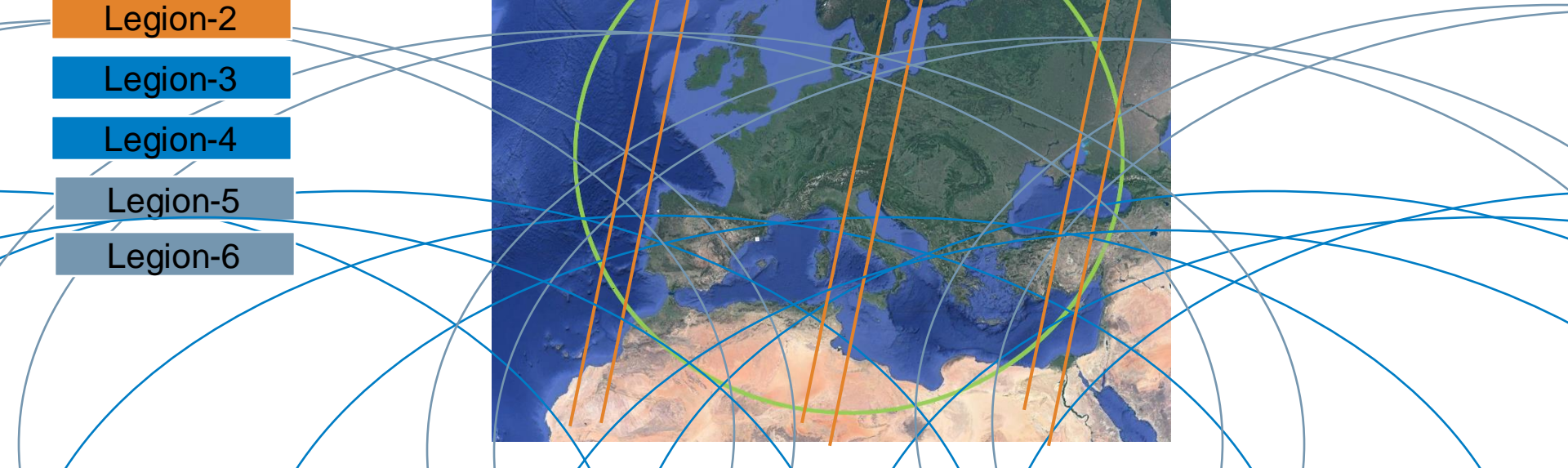
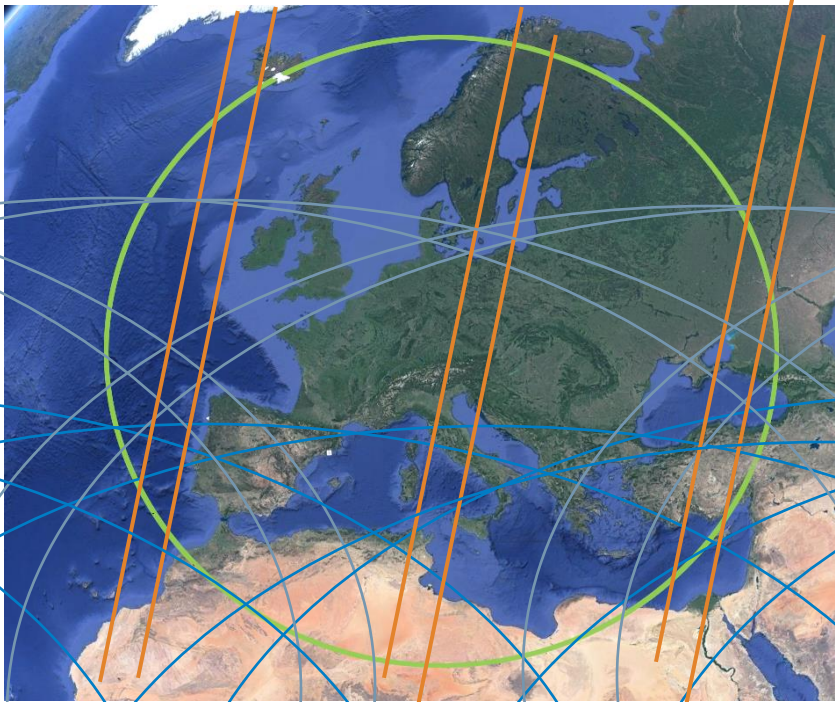
Legion-2

Legion-3

Legion-4

Legion-5

Legion-6



BUSINESS APPLICATIONS

Geospatial data is used for a wide variety of defence, security and intelligence business applications to see the world as it is, and how it is changing.

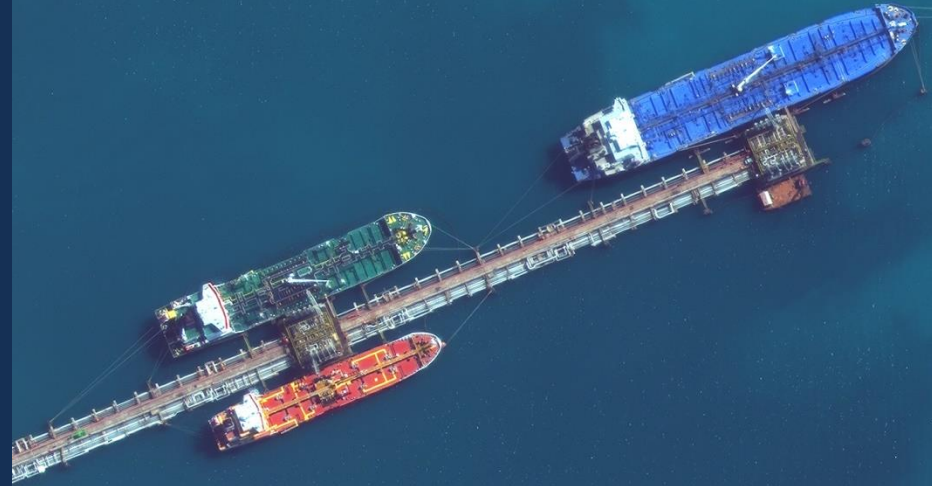


CIVIL GOVERNMENT

- Urban planning
- Migration
- Asset management
- Disaster response
- Utilities management
- Sustainable development
- Maintaining cadastral maps
- Monitoring compliance

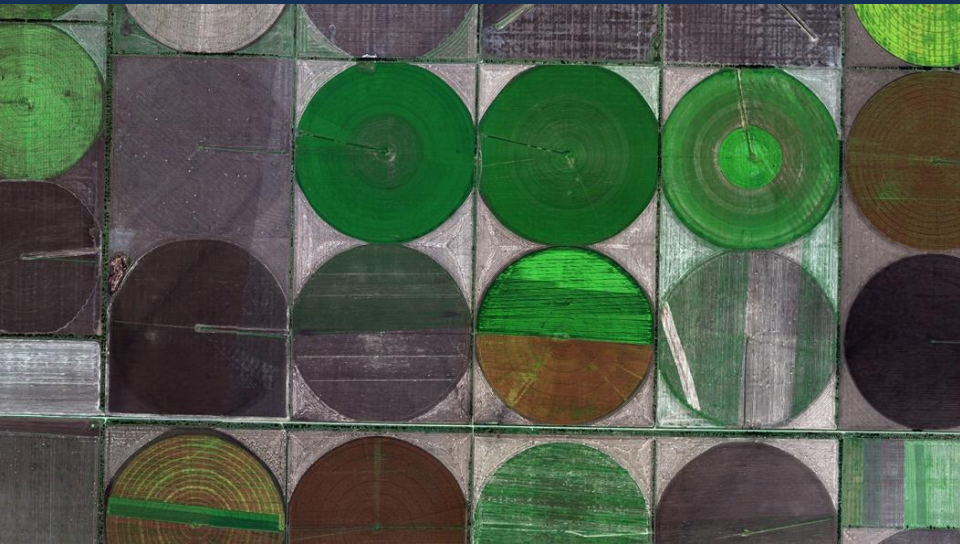
MARITIME

- Identification of vessels
- Detection of illegal fishing
- Detection of pollution
- Validation of AIS Data
- Detection of coastal erosion
- Identification of algal blooms
- Bathymetric data analysis
- Updating navigational maps



AGRICULTURE & FORESTRY

- Early warning of plant heath
- Yield calculations
- Optimising harvest timing
- Irrigation system planning
- Soil quality management
- Water resource management
- Calculating carbon stocks
- Natural resource protection



DEFENCE & INTELLIGENCE

- Movement of equipment
- Damage from attacks
- Offensive / defensive systems
- Test camouflaged bunkers
- Mission planning
- Search & rescue operations
- Precise mapping
- Movement of people



ENERGY & MINING

- Asset management
- Competitor auditing
- Resource exploration
- Compliance analysis
- Material detection
- Leak detection
- Pipeline mapping
- Inventory analysis

EMERGENCY MANGEMENT

- Predict likelihood of fires
- Estimate path of flooding
- Detect geological movement
- Aid in development planning
- Analyse effects of disaster
- Crowd management
- Insurance analysis
- Response implementation



EDUCATION & RESEARCH

- Environment monitoring
- Impact assessment
- Monitor urban development
- Monitor soil losses
- Disaster impact
- 16 band spectral analysis
- Crime predication software
- Monitoring historical data

**Thank you very much
Questions?**

