

A hand is shown holding a glowing blue wireframe globe. The globe is composed of many small, interconnected triangles, creating a mesh-like structure. The hand is positioned over a laptop screen, which is partially visible in the background. The overall scene is set against a dark, blurred background, suggesting a professional or technological environment.

# OPEN DATA & OPEN KNOWLEDGE Workshop

---

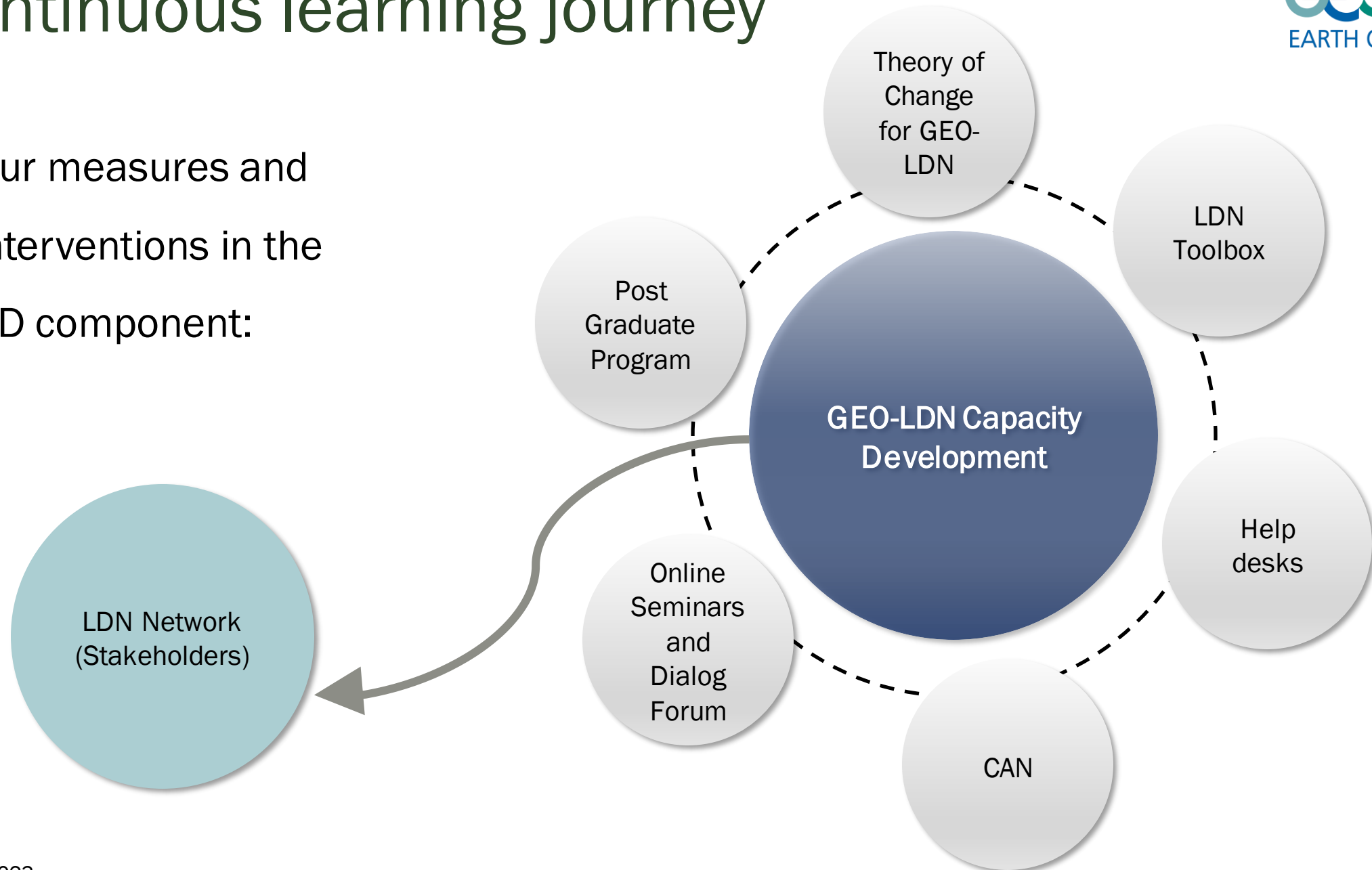


# GEO-LDN: NATIONAL COORDINATION THROUGH CAPACITY DEVELOPMENT

Mark Grasy

# Continuous learning journey

- Our measures and interventions in the CD component:



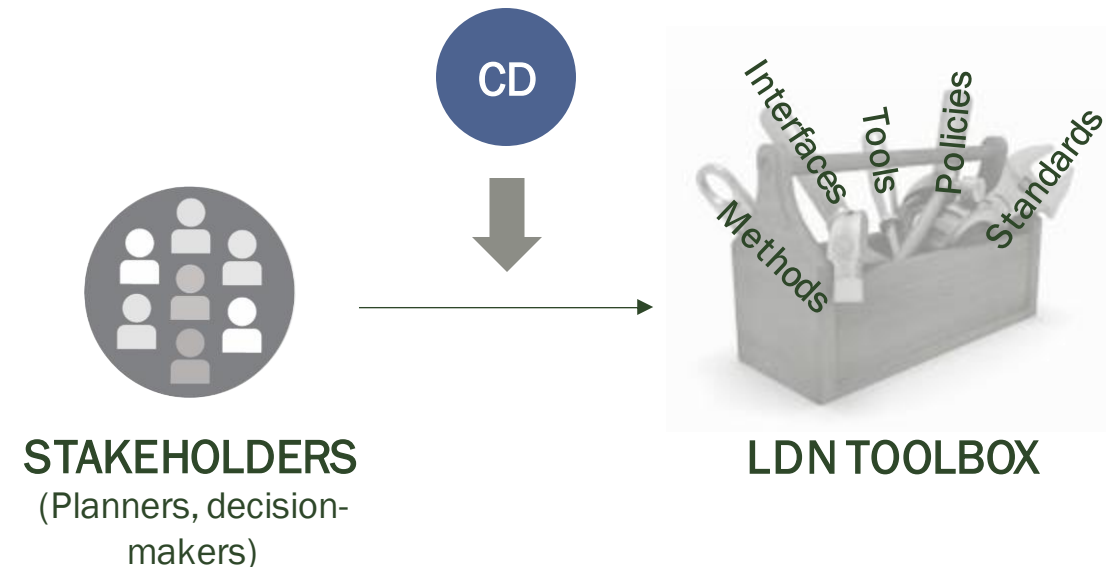
# How can ODOK be used to support CD?

- **Enabling factor:** the basis is the principle of sharing/openness.

*E.g., LDN Toolbox.*



- **Goal of the flagship:** enabling stakeholders to take informed decisions by using EO for planning and implementation.



# The country process – fostering the creation of a national team

## Capacity Accelerator Network (CAN)



Enabling factors on national level



National spatial planning and reporting, legal frameworks



Sharing, teamwork, and openness are essential for practicing ILUP

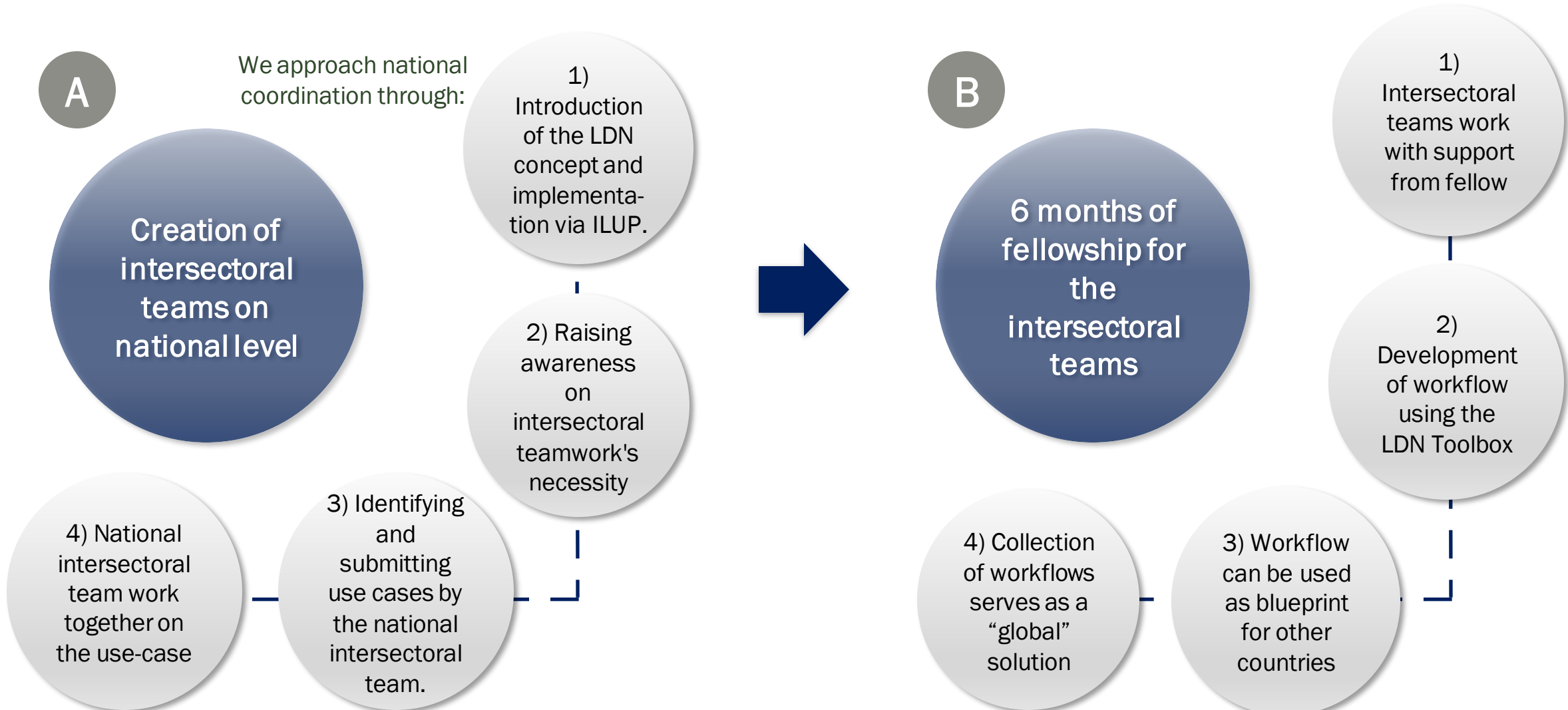


EO data, tools, algorithms equally available for all stakeholders

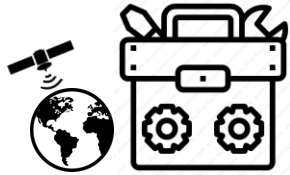


Conservationists, planners and scientists need to come together

# Activities to drive to national coordination



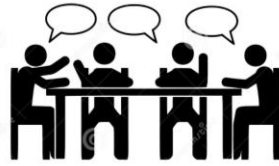
# Summary



Tools, Data, and  
Knowledge  
accessible to  
stakeholders



Stakeholders  
identified through  
CAN open call,  
outreach,  
networking, and  
continuous  
learning journey



Inter sectoral  
group brought  
together (CAN)



Use case and  
workflow  
development on  
national level and  
projecting use  
case to country  
with similarities



Iterative process:  
learning through  
use cases and  
incorporating  
lessons learnt into  
CD

# CONTACT DETAILS



EMAIL ADDRESS

[info@geo-ldn.org](mailto:info@geo-ldn.org)

[mark.grasy@giz.de](mailto:mark.grasy@giz.de)



PHONE NUMBER

+49 173 173 5180