

# OPEN DATA & OPEN KNOWLEDGE Workshop

---

Humanitarian Data Cube

Valentin Pesendorfer

UN World Food Programme

# Who we are

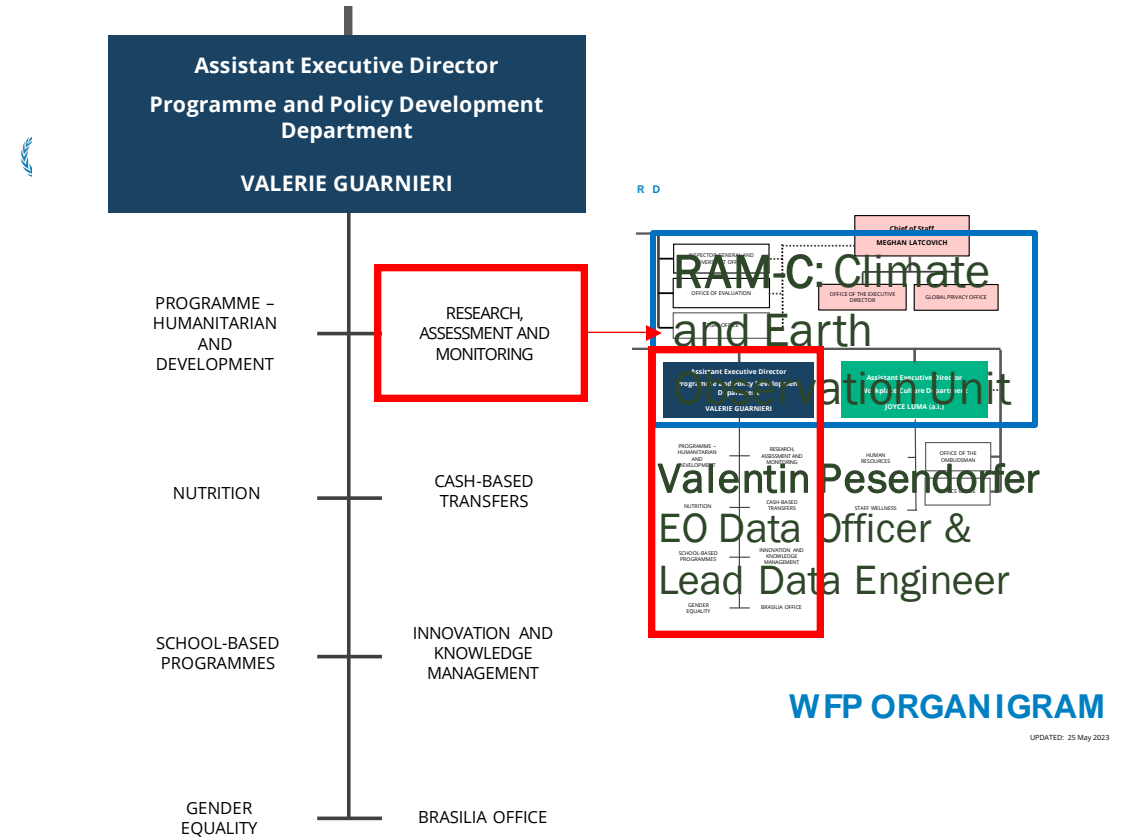


WFP is the **world's largest Humanitarian Organization**, assisting 160 million people in 120+ countries

**160**  
MILLION  
PEOPLE  
Received assistance from WFP in 2022

**5.6K**  
TRUCKS  
100 aircraft and 30 ships are on the go on any given day

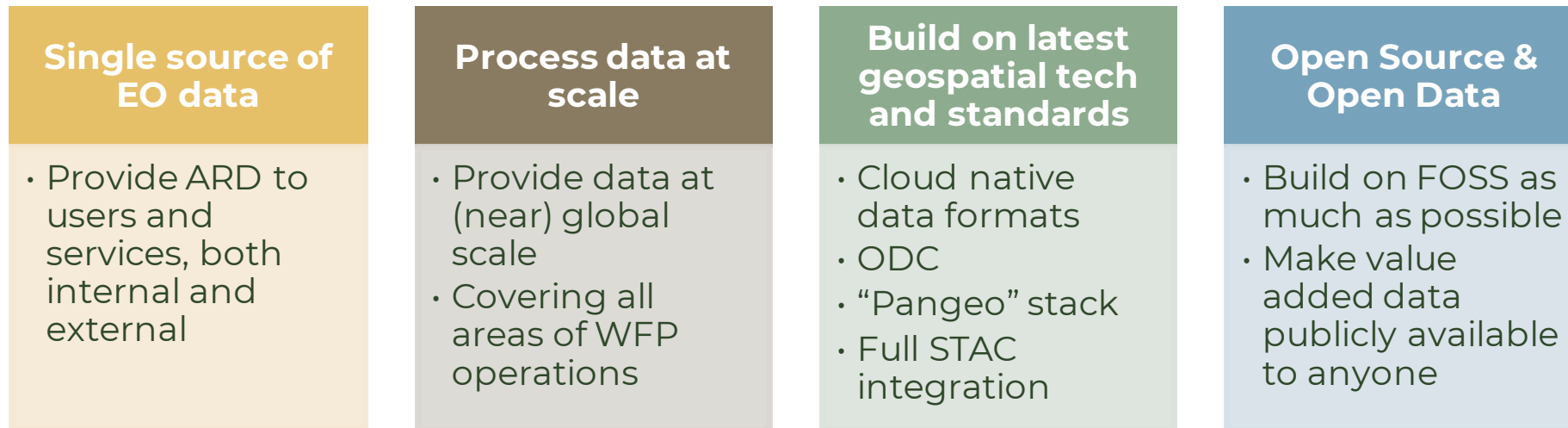
**20**  
Million children  
Received nutritious meals, school snacks or take-home rations



# The Humanitarian Data Cube

⚠ Growing volume of EO data required change in approach and **move from on-prem to cloud infrastructure**

🎯 **Goal:** *leverage cloud services, horizontal scalability and serverless infrastructure* to create a **single system** serving all of WFP's EO data needs

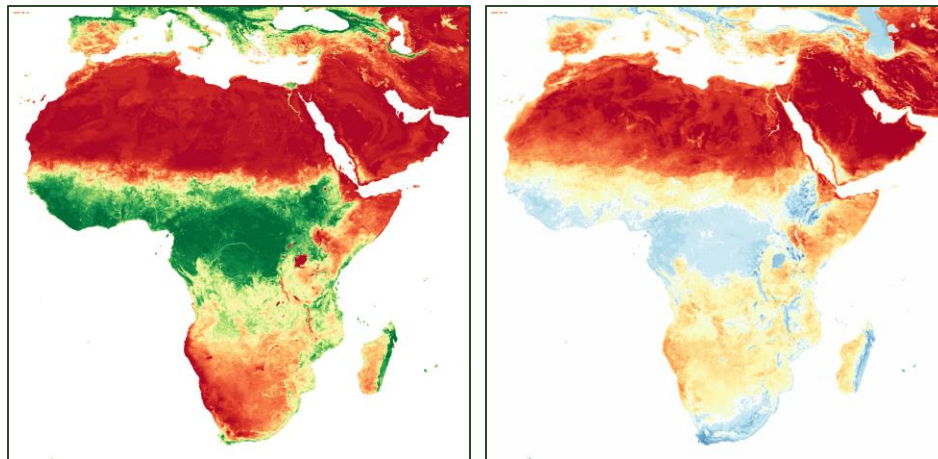


# The Humanitarian Data Cube

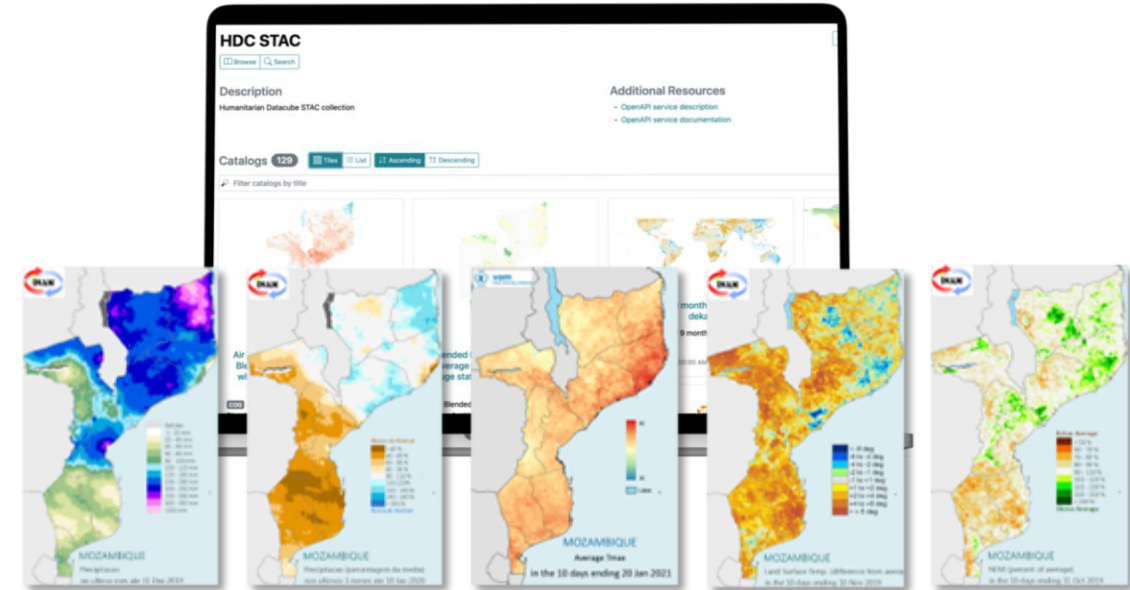
→ Fully fledged deployment on AWS

→ Currently around **100 data products**

- Mainly in **climate domain**, containing **unique data products**
- Assimilating **full archives of ECMWF ERA5** and **seasonal forecast data**



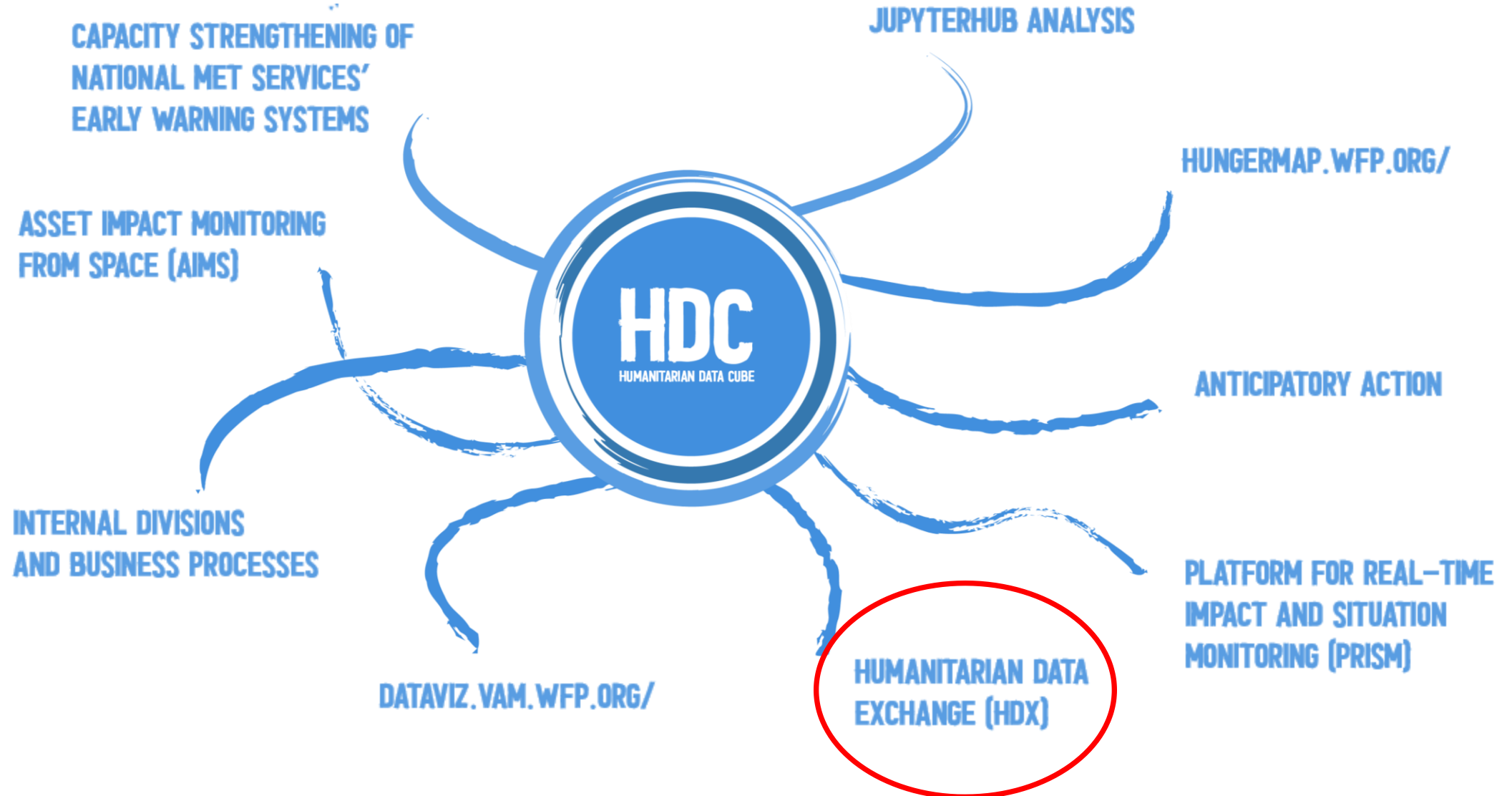
NDVI & LST Day  
2020-08-01 to 2021-07-30




## 🎯 OBJECTIVES

- Establish HDC as **single source of truth for EO data** in WFP
- Continuously add **new data products** and **higher res data**
- Facilitate and increase **sharing of data** and **software** to wider community


# HDC – serving WFP and beyond




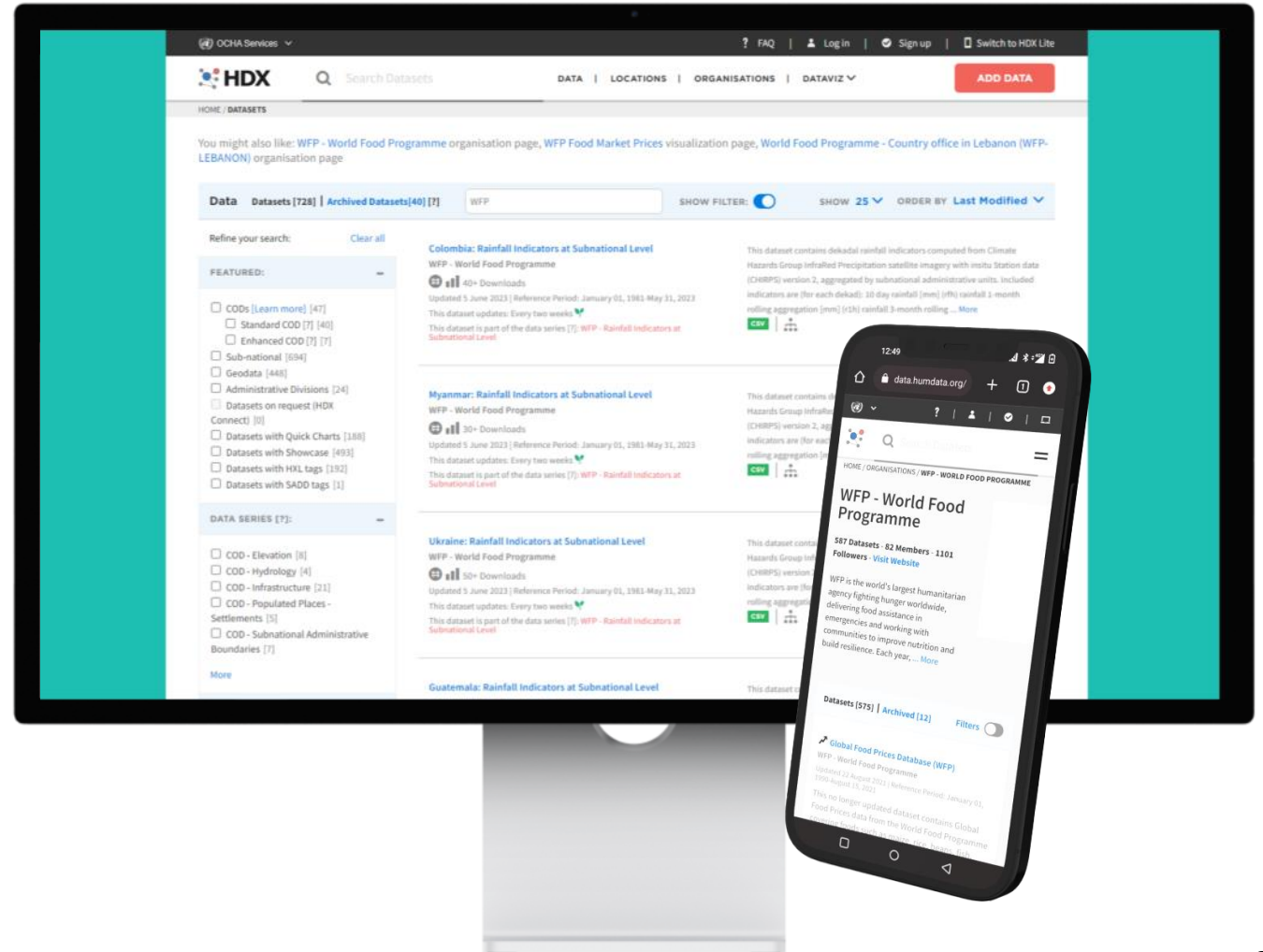
# HDC x HDX

 Collaboration with UN OCHA to publish first-of-a-kind climate data on the Humanitarian Data Exchange (HDX)

 Filling a crucial data gap on HDX

 Bespoke datasets for humanitarian use at subnational level

 **SOON** Soon more indicators, countries and all admin levels



# CONTACT DETAILS



EMAIL ADDRESS

[valentin.pesendorfer@wfp.org](mailto:valentin.pesendorfer@wfp.org)



PHONE NUMBER

[linkedin.com/in/valpesendorfer](https://www.linkedin.com/in/valpesendorfer)

[twitter.com/valpesendorfer](https://twitter.com/valpesendorfer)

[fosstodon.org/@valpesendorfer](https://fosstodon.org/@valpesendorfer)